

State of Wyoming Corner Record

(In compliance with the CORNER PERPETUATION AND FILING ACT, Wyoming Statutes, 1977, Section 36-11-101, et. seq., and the Rules and Regulations of the Board of Registration for Professional Engineers and Professional Land Surveyors)

Reverse side of this form may be used if more space is needed.

Record of original survey and citation of source of historical information (if corner is lost or obliterated). Description of corner monumentation evidence found and/or monument and accessories established to perpetuate the location of this corner. Sketch of relative location of monument, accessories, and reference points with course and distance to adjacent corner(s) (if determined in this survey). Method and rationale for reestablishment of lost or obliterated corner.

G.L.O. Notes: U.S. Deputy Surveyor, Edwin James, June 21, 1871; 40.00 Chains... Set a sand stone 17 x 8 x 8 for quarter section corner.

Found: 12" x 10" x 5" sandstone, marked 1/4 on East face.

Set: No. 5 x 18" rebar memorial. Also set a 5' steel fence post witness 3' south.

See back of this sheet for ties to adjacent monuments.

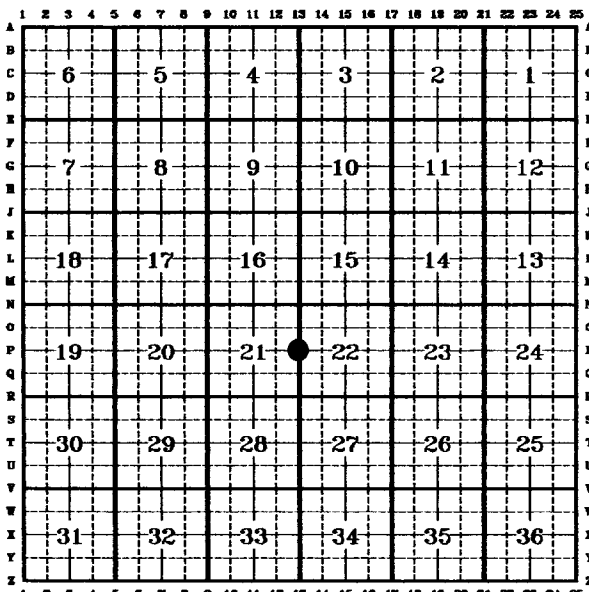
200709

LARAMIE COUNTY CLERK
CHEYENNE, WY.

97 APR 7 PM 4 40

Date of Field Work: 16, May, 1994 Office Reference: EXXON LOOSELEAF

CROSS INDEX DIAGRAM



Firm/Agency, Address

Paul A. Reid, A.V.I.p.c.

2035 Westland Road

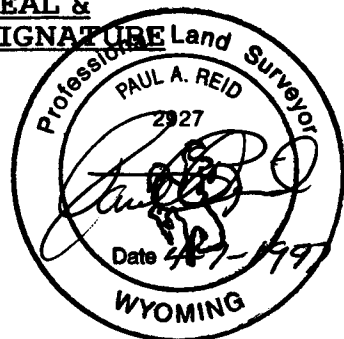
Cheyenne, WY 82001

Telephone Number:

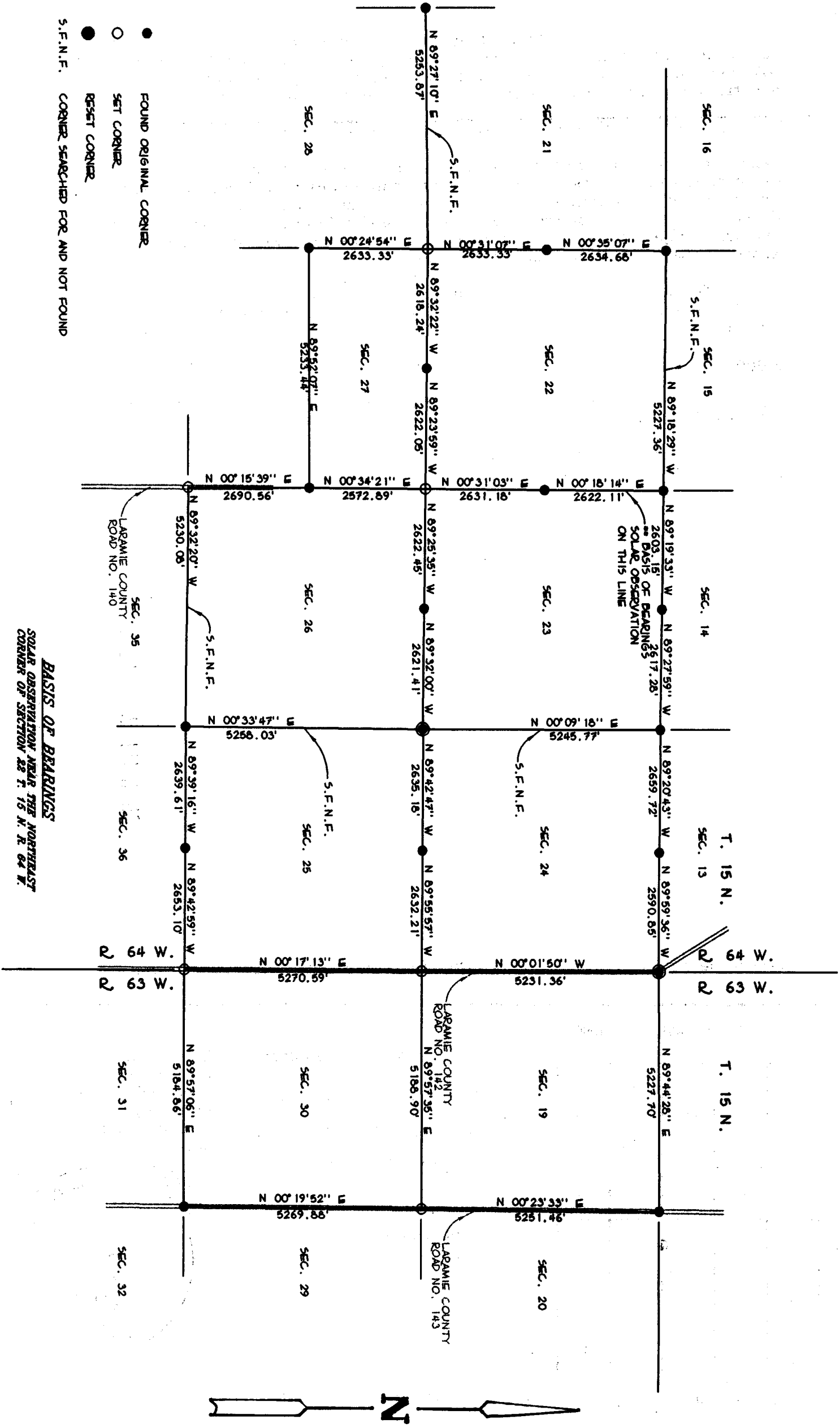
(307)-634-6017

This corner record was prepared by me or under my direction and supervision.

SEAL & SIGNATURE



Corner Name: W 1/4 Cor. Section: 22 T 15N R 64W;6TH P.M. Cross-Index No.: P-13



- FOUND ORIGINAL CORNER
- SET CORNER
- RESET CORNER
- S.F.N.F. CORNER SEARCHED FOR AND NOT FOUND

BASIS OF BEARINGS
 SOLAR OBSERVATION NEAR THE NORTHEAST
 CORNER OF SECTION 28 T. 15 N. R. 64 W.